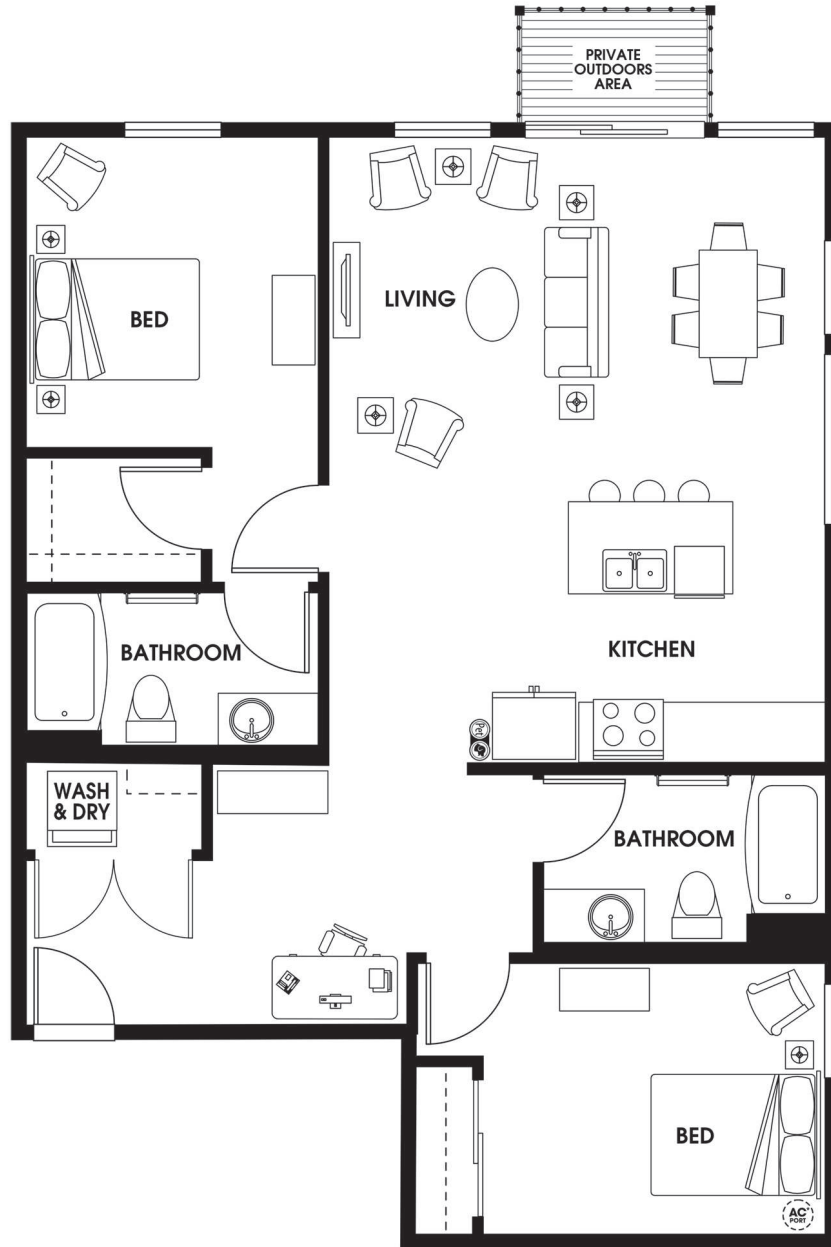


B12

2 BED | 2 BATH

1128

SQ. FT.



DISTRICT
— FLATS —

17409 133rd Ave NE | Woodinville, WA 98072

districtflatswoodinville.com

Floor plans are artist's rendering. All dimensions are approximate. Actual product and specifications may vary in dimension or detail. Not all features are available in every apartment. Prices and availability are subject to change. Please see a representative for details.

